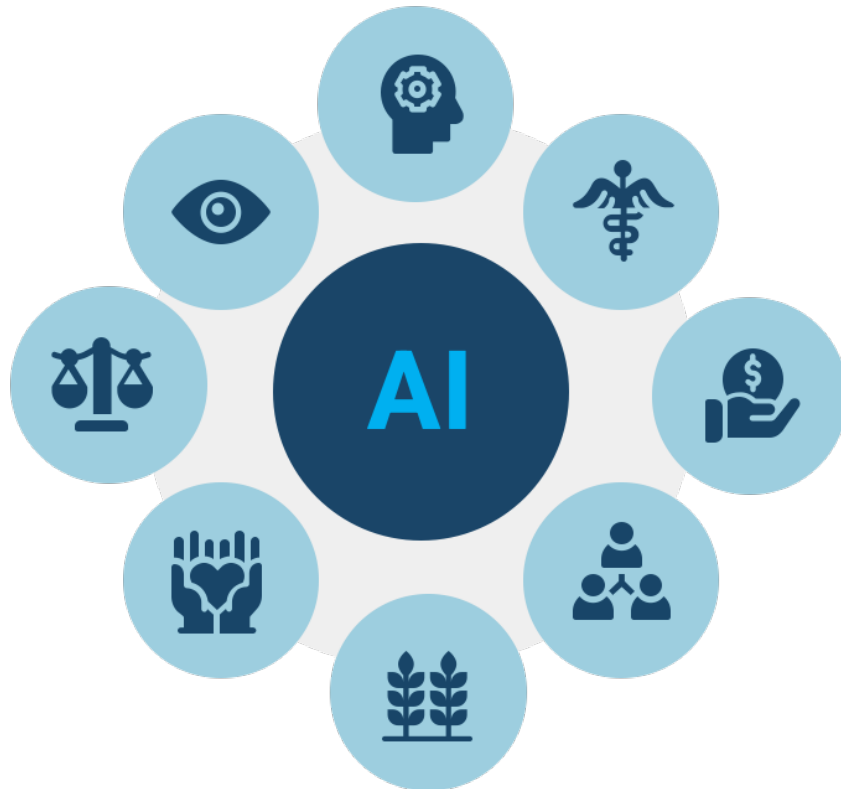


The Practical Ethics Toolbox

Partners



AI systems should work with

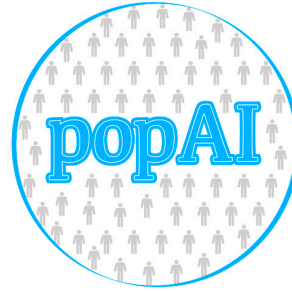


Efficiency & accuracy

Respect to fundamental rights and
democracy

Ethics toolbox

<https://www.pop-ai.eu/ethics-toolbox/>



Main topics addressed

- **Who will be responsible for the AI systems:** AI developers, LEAs institutions, Governments?
- **In which part of the decision-making process the AI is integrated?**
- **How can humans be involved** in AI systems?
- **What regulations are involved** in this scenario?
- **What are the main discussions** around AI, Ethics and LEAs?

Educational Videos



Technical Briefs



Taxonomies





[HOMEPAGE](#)

[ABOUT US](#)

[CONSORTIUM](#)

[NEWS & EVENTS](#)

[ACTIVITIES](#)

[OUTCOMES](#)

[MEDIA KIT](#)

[CONTACT US](#)

Ethics Toolbox

The Practical Ethics Toolbox responds to the crucial necessity of AI introduced in Law Enforcement with the potential to generate benefits in efficiency and accuracy, bringing positive change to European Law Enforcement Agencies' (LEAs) operational capacity. However, at the same time, AI generates also great risks for fundamental rights and democracy. To mitigate risks and create a just, sustainable and inclusive European AI culture for Law Enforcement, it is important to understand what AI ethics is and how it applies these institutions.

The Toolbox comprises three resources that integrate the multiple perspectives of ethics and AI through LEAs' space. The first resource is a collection of educational videos exploring the intricate relationship between AI and ethics within the context of policing. The second resource constitutes three ethics cases that explore AI in law enforcement, providing awareness of the ethical implications and information about AI's applications, potential benefits and risks in policing. The third resource is an interactive visualisation of four groups of taxonomies. In the taxonomies, users can find specific terms and documents of the work accomplished under the four popAI project thematics.

[EDUCATIONAL VIDEOS](#)

[TECHNOLOGY ETHICS BRIEFS](#)

[TAXONOMIES](#)

Educational Videos

These videos aim to provide valuable insights and enhance comprehension of the ethical considerations regarding AI's use in law enforcement. Each video tackles various aspects of AI in policing, answering crucial questions and providing clarity on its implications. With these videos, viewers can gain fundamental knowledge to understand the ongoing debates in the field, participate in well-informed conversations, and contribute to the discussion on AI's role in law enforcement.

Educational Videos



**Doubts and
debates**



**Risk and
Implications**



**Ethics and
Morality**



**Avoiding
Bias**



**Accountability
and auditability**



**Advising and
Monitoring**



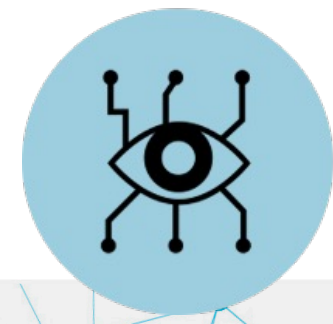
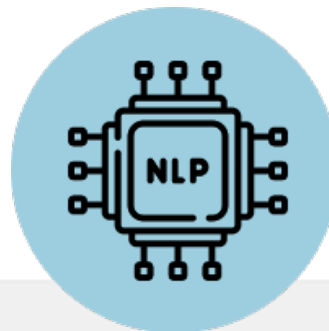
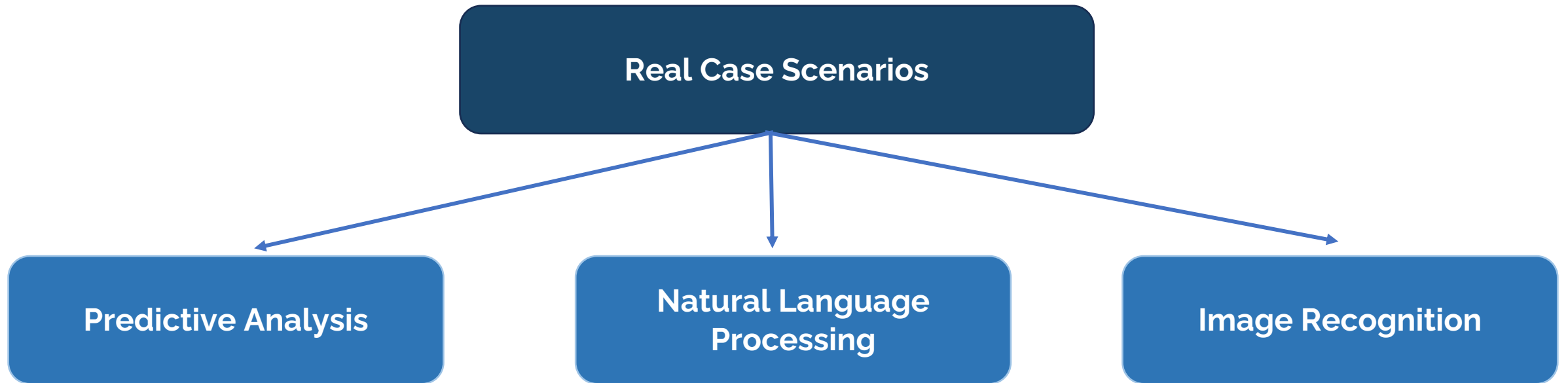
**Impact on
Citizens**



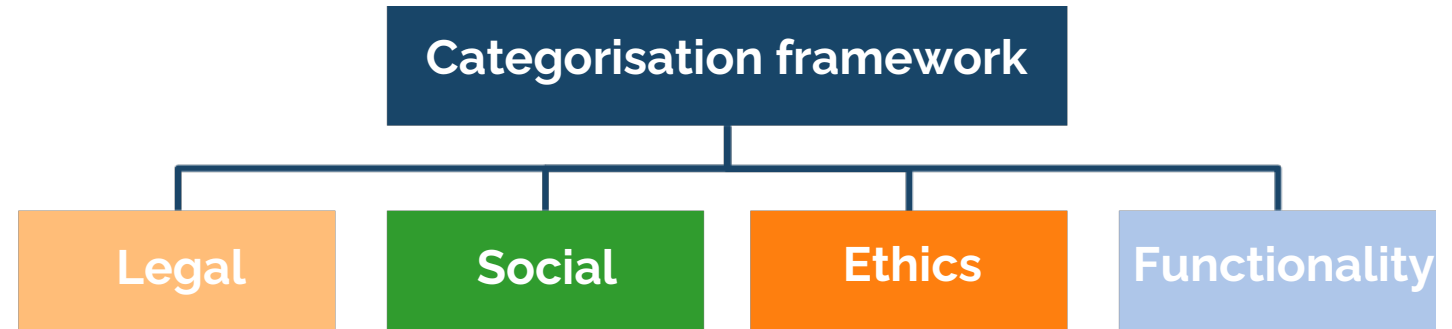
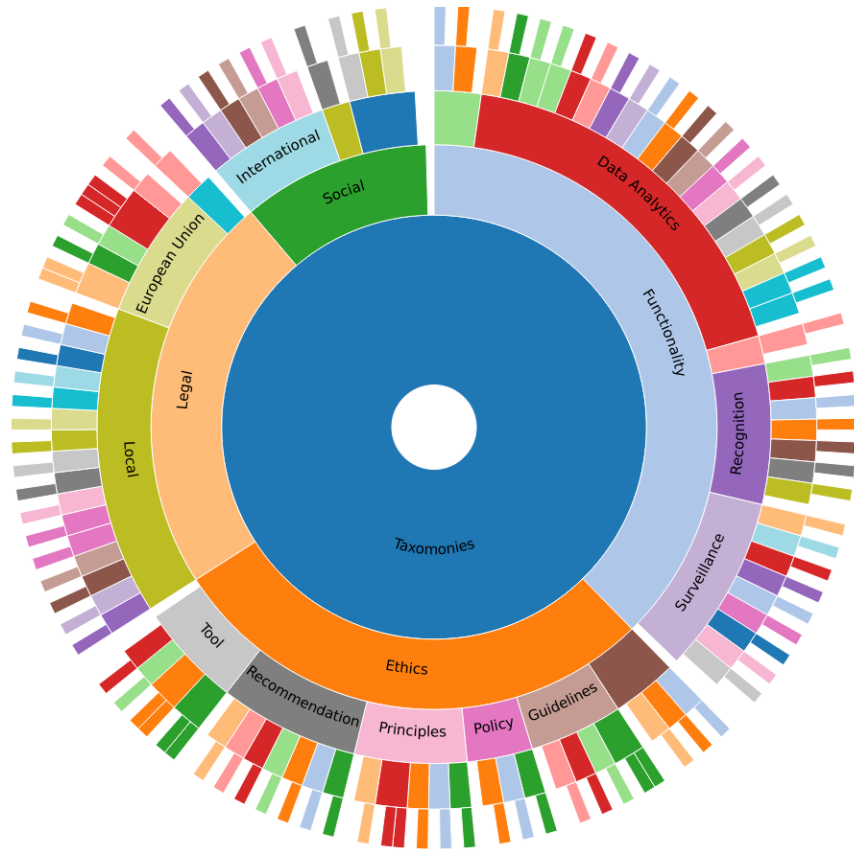
**Meeting
Police Needs**



Technical Briefs



Taxonomies



What are the main categories?



Legal

- European Union
- Federal
- Local

Ethical

- codes of ethics,
- recommendations
- principles,
- Tools,
- policies and guidelines

Social

- International
- National
- Local

Functionality

- Data analysis
- Recognition
- Surveillance
- Communication
s

Aggregation of the taxonomies



Legal

- Institution passing the normative

Ethical

- CSO
- Professional Associations
- Private sector
- Government
- etc

Social

- Google glasses
- Body cameras
- CCTVs
- Drones
- Etc

Functionality

- Deep Learning
- Machine learning
- Neural networks
- Facial recognition
- Biometric analysis
- Etc.

Thank you

